



Patterns of biodiversity response along a gradient of forest use in Eastern Amazonia, Brazil

Sérgio G. Milheiras^{1,2}, Marcelino Guedes³, Fernando Augusto Barbosa Silva⁴, Perseu Aparício⁵ and Georgina M. Mace¹

¹ Centre for Biodiversity and Environment Research, University College London, London, United Kingdom

² School of Natural and Environmental Sciences, Newcastle University, Newcastle-upon-Tyne, United Kingdom

³ Embrapa-Amapá, Macapá, Amapá, Brazil

⁴ Instituto de Ciências Biológicas, Universidade Federal do Pará, Belém, Pará, Brazil

⁵ Universidade Estadual do Amapá, Macapá, Amapá, Brazil

ABSTRACT

The preservation of tropical forests is increasingly at risk, including forests located within human-modified landscapes that retain high conservation value. People modify and interact with these landscapes through a wide range of uses. However, our knowledge of how different forest uses affect biodiversity is limited. Here, we analyse the responses of different taxa to four distinct categories of forest management, namely old-growth forest, Brazil nut extraction areas, reduced impact logging areas, and eucalyptus plantations. Within six independent replicates of each category, we sampled three taxa (fruit-feeding butterflies, dung beetles, and trees) in eastern Amazonia. Forests under moderate use (Brazil nut extraction and reduced-impact logging) had similar, albeit slightly lower, diversity levels relative to old-growth forests, while communities in plantations were significantly less diverse. Only 4%, 20%, and 17%, of the sampled butterfly, dung beetle, and tree species, respectively, were restricted to old-growth forests. This study provides further empirical evidence of the importance of old-growth forest conservation in the context of human-modified landscapes. It also suggests that landscape matrices integrating forest uses at varying intensities are well positioned to reconcile biodiversity conservation with the production of goods that support local livelihoods.

Submitted 19 June 2019
Accepted 29 December 2019
Published 11 February 2020

Corresponding author
Sérgio G. Milheiras,
sergio.guerreiro-milheiras@ncl.ac.uk

Academic editor
Le Yu

Additional Information and
Declarations can be found on
page 14

DOI 10.7717/peerj.8486

© Copyright
2020 Milheiras et al.

Distributed under
Creative Commons CC-BY 4.0

OPEN ACCESS

Subjects Biodiversity, Conservation Biology, Ecology, Forestry

Keywords Amazon forest, Brazil nuts, Amapá, Pará, Forest management, Nymphalidae, Scarabaeinae, Selective logging

INTRODUCTION

Tropical human-modified landscapes are characterised by vegetation patches under varying levels of use intensity and habitat degradation, which influence their capacity to retain biodiversity and provide ecosystem services (Melo *et al.*, 2013). The presence of undisturbed natural habitats in these landscapes has clear benefits for local biodiversity (Gibson *et al.*, 2011). But in systems where undisturbed areas are scarce, forests under some degree of anthropogenic disturbance can help buffer the impact of more intensely managed land (Bhagwat *et al.*, 2008; Santos-Heredia *et al.*, 2018). Furthermore, the benefits extracted

from these forests might be crucial for achieving sustainable landscape configurations (McNeely & Schroth, 2006; Nobre et al., 2016). Yet, we still have limited knowledge of how different components of human-modified landscapes, including their animal and plant communities, are affected by the full spectrum of use intensities that are common in many tropical regions (Chazdon et al., 2009).

Forest use intensification tends to lead to diminished biodiversity (Barlow et al., 2007a; Davis, Huijbregts & Krikken, 2000; Edwards et al., 2014; Gardner et al., 2008; Nichols et al., 2007; Wilcove et al., 2013). Selectively logged forests, for example, can retain most of the species found in old-growth forest (Ghazoul, 2002; Hamer et al., 2003; Lewis, 2001; Ribeiro & Freitas, 2012; Slade, Mann & Lewis, 2011), but that is dependent on the volumes harvested or the duration of rotation cycles (Burivalova, Şekercioğlu & Koh, 2014; Edwards et al., 2014; Richardson & Peres, 2016). Furthermore, ecological processes may be negatively affected even under low logging intensities (França et al., 2017).

The comparative biodiversity studies that assess these impacts benefit from multiple taxa approaches due to possible idiosyncratic responses from specific taxonomic groups (Kessler et al., 2009; Beiroz et al. 2017). Invertebrates respond rapidly to disturbance due to their short generation times and high population growth rates (Sodhi et al., 2010). Both fruit-feeding butterflies and dung beetles have additional characteristics that increase their suitability as ecological indicators, such as relatively large body sizes, ease of sampling and a relatively well-known taxonomy (Ribeiro & Freitas, 2012). In both taxa the species with restricted geographic ranges or forest specialists tend to be particularly vulnerable to disturbance (Cajaiba et al., 2017; Davis, Huijbregts & Krikken, 2000; Lewis, 2001; Sodhi et al., 2010). But their responses to disturbance are not necessarily congruent due to different life histories (Davis, Huijbregts & Krikken, 2000; Schulze et al., 2004). The feeding specialisations seen in some butterfly species are less common in dung beetles, for example. On the other hand, the involvement of dung beetles in ecosystem processes is better studied, including their impact on nutrient cycling, bioturbation, and secondary seed dispersal (Nichols et al., 2008; Santos-Heredia et al., 2018).

Trees are the main structural components of forests and tree community change might in fact help predict changes in other taxa (Barlow et al., 2007a; Bobo et al., 2006). Trees are severely affected by land use intensification (Gerstner et al., 2014; Philpott et al., 2008; Schulze et al., 2004). Tree communities might not resemble those of intact forests even several decades after disturbance (Richardson & Peres, 2016; Sodhi et al., 2010). Furthermore, changes in species composition can take years to manifest, including seedling regeneration (Darrigo, Venticinque & Dos Santos, 2016). While the Amazonian tree flora is one of the most diverse globally, its species and associated extinction risk are in many cases poorly known (Ter Steege et al., 2015). Tree species with certain traits, such as reliance on mammal pollinators, might be particularly vulnerable to disturbance (Sodhi et al., 2010).

Here, we examine the spatial distribution of fruit-feeding butterfly, dung beetle, and tree communities in a landscape with varying forest management regimes. Our main objective is to compare the conservation value, i.e., the capacity to support biodiversity, of four relevant forest uses in northeast Amazonia, namely old-growth forest, Brazil nut extraction areas, selective logging areas, and eucalyptus plantations. While old-growth forest is sampled

here as baseline, the focus of this research is on forests directly used by people, therefore excluding secondary forests, which mostly benefit people indirectly, as a vital component of the shifting agriculture cycle (Brown & Lugo, 1990). The different research questions that drive this study are: can moderate and intensive forest uses maintain the same levels of richness, abundance and diversity found in old-growth forests? Do different taxa exhibit the same responses to forest use intensification? And can moderate and intensive use forests have a role in sustainable human-modified landscapes? Here we: (i) compare the levels of species richness, abundance and diversity of the three sampled taxa between old-growth forests, Brazil nut extraction areas, selective logging areas, and eucalyptus plantations; (ii) assess if fruit-feeding butterflies, dung beetles, and trees exhibit congruent responses to forest use change; (iii) explore the implications this research to nature conservation and forest management in the tropics.

METHODS

Study site

The study was undertaken at the east–west border between Amapá and Pará (1°0′S–0°30′S; 53°0′W–52°10′W), two states in the Brazilian Amazon forest (Fig. 1). Forest cover is relatively high, while human density is low and concentrated on the margins of Jari River. The landscape is characterised by a large eucalyptus plantation and natural forest under different management regimes, with relatively little agriculture. The climate is tropical, the mean annual rainfall is around 2,300 mm, with a wetter season from January to June, and mean temperature around 27 °C throughout the year (INMET, 2018). Soils are predominantly ferralsols and Acrisols (IBGE, 2003). Sampling points ranged between 45–217 metres above sea level, with slopes of 0.1–9.2 degrees.

The sampled eucalyptus (*Eucalyptus urograndis*) plantations lie mostly on the Pará side of the study area. The sampled areas were planted between 2011 and 2013. The sampled selective logging areas were cut down, for the first time, in 2013 and 2014, with the timber extracted ranging from 9.5–16.2 m³ ha⁻¹ (3–7 trees ha⁻¹). Brazil nut trees (*Bertholletia excelsa* Bonp.) tend to have an uneven distribution throughout their range, occurring in clusters (Mori & Prance, 1990), locally called “castanhais”. Within the study area, “castanhais” are mainly located in the sustainable use reserve RESEX Cajari (IUCN protected area category VI), where sampling was carried out. Brazil nut extraction is legally protected within the RESEX and is managed by the local community, while commercial logging is illegal. Brazil nut trees used locally were mapped as part of a project in collaboration with the state government (Costa, 2018). Local fruit fall and collection occur mostly between January and April. Old-growth forest sampling sites were located in *terra firme* (non-flooded) dense forest, half in the western part of the study area, the other half inside the RESEX in the eastern part of the study area. These sites reflect the conditions of old-growth forest within a landscape with human presence. They are relatively accessible and therefore likely to experience low to moderate levels of human disturbance (e.g., hunting). The distance to the closest secondary road in old-growth forest sampling points ranged from 1.2 to 4.2 km.

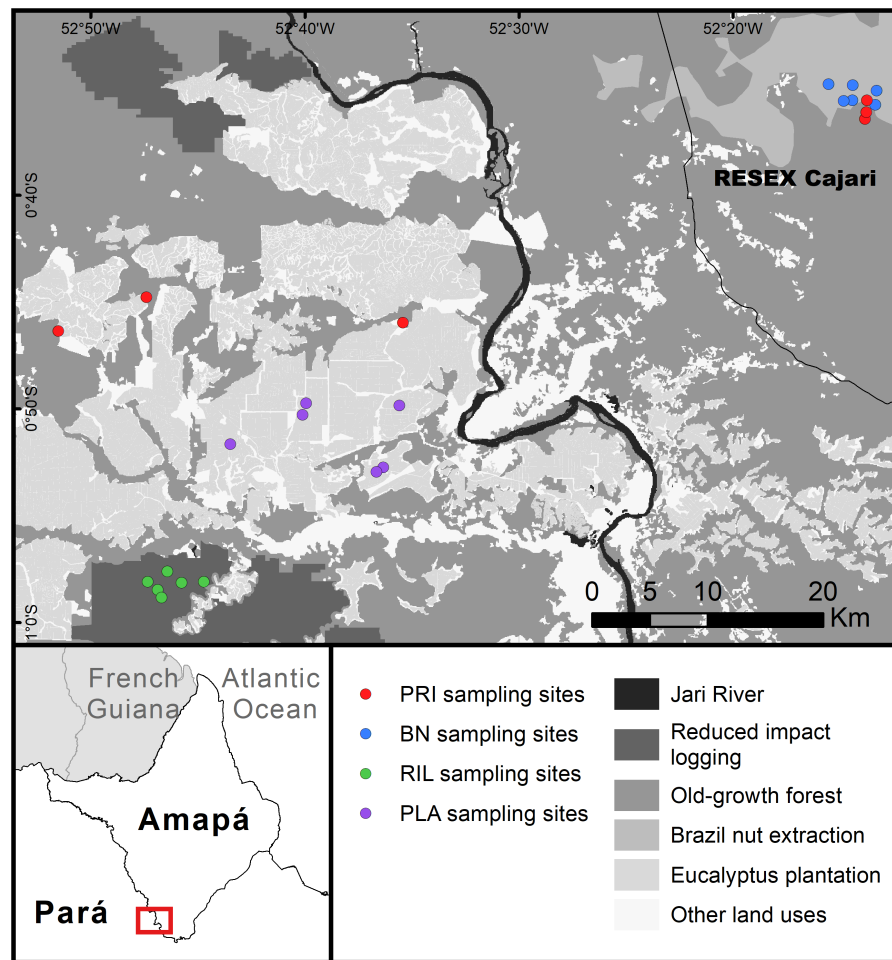


Figure 1 Map of the study area. Abbreviations refer to old-growth forest (PRI), Brazil nut extraction (BN), reduced impact logging (RIL), eucalyptus plantation (PLA). RESEX is a protected area category in Brazil. BN delineates the area where Brazil nut trees have been mapped within the RESEX (Costa, 2018). Latitudinal and longitudinal coordinates are indicated at the margins of the map.

Full-size DOI: [10.7717/peerj.8486/fig-1](https://doi.org/10.7717/peerj.8486/fig-1)

We sampled a total of 24 sites, six sites in each forest use category. Sampling was conducted at the same locations for dung beetles, butterflies, and trees (Fig. 1). Butterfly and dung beetle traps were installed at least 30 metres from the tree plots, in opposite directions (i.e., at least 100 metres distance between butterfly and dung beetle traps). All sampling sites were separated by more than 500 m (range: 0.6–76.1 km; mean: 37.3 ± 27.0 km). Site location was also constrained by accessibility and a minimum distance to edge of 100 m. We used a Garmin GPSMAP 64s for georeferencing. Fieldwork was authorised by Instituto Chico Mendes de Conservação da Biodiversidade (process number: 56120-1) and Conselho Nacional de Desenvolvimento Científico e Tecnológico (process number: 01300.001010/2016-16).

Dung beetle sampling

Dung beetles (Coleoptera: Scarabaeinae) were sampled, using baited pitfall traps, in May–July 2017 with replication in October–December 2017, covering the peaks of the wet and dry seasons to account for seasonality (*Korasaki et al., 2013*). Each sampling unit consisted of three traps placed three meters apart in a triangular arrangement. Traps were collected after 24 h. Previous studies have shown that 24 h sampling periods for dung beetles produce reliable results (*França et al., 2016*). Trap configuration consisted of a rain cover (plastic plate with 25.5 cm diameter, placed 16 cm from the ground), below which a meshed nylon bag containing the bait was suspended, directly above a buried plastic container (13 cm height × 11.5 cm diameter). A third of the container was filled with salted water. The bait used was human faeces (~30 g), which is an effective bait for dung beetles (*Marsh et al., 2013*). Specimens were stored in alcohol at 70%. After initial triage by morphospecies, the material was sent to the Federal University of Pará for species identification by one of the co-authors (F.A.B.S.).

Butterfly sampling

Frugivorous butterflies (Lepidoptera: Nymphalidae) were sampled using fruit-baited cylindrical traps (van Someren-Rydon traps), following established guidelines (*Lucci Freitas et al., 2014; Van Swaay et al., 2015*). Fieldwork took place between May–July 2017 and was replicated between October–December 2017 to account for seasonal fluctuations (*Hamer et al., 2005a; Hamer et al., 2005b*). Each sampling unit consisted of a linear transect with four traps separated by 30 m. The base of the traps hung between 1 m and 1.5 m above the ground. The bait was banana fermented for 48 h. After installation, traps remained in the field for six days and were visited every 48 h to replace the bait and record the individuals captured. At least one voucher specimen per species was retained as reference. The remaining captured individuals were identified, photographed with a macro lens, marked with a black or silver marker and released. The collected individuals were sent to State University of Campinas in São Paulo, where their identification was validated by the team of Prof. André Lucci Freitas. Recaptures were not used in the analyses to avoid overestimating butterfly abundance (*Ribeiro et al., 2008*). The main identification references used were *Warren et al. (2013)*, *Neild (1996)*, *Neild (2008)*, and *D’Abrera (1987)*, *D’Abrera (1988)*.

Tree sampling

Trees with diameter at breast height (DBH) equal or higher than 10 cm were sampled in 0.4 ha plots (100 × 40 m). Sampling was conducted between July and October 2017. Plot establishment followed the guidelines from *Phillips et al. (2016)*. Six plots were set in each forest use under analysis, totalling 24 plots. The plots were first stringed, and then coordinates, elevation and slope were registered at each plot corner and its centre. Plot orientation was equally divided between N-S and E-W. All sampled trees were tagged. Voucher photos were taken of each species, with a small cut in the trunk and leaf close-up when available. When buttresses prevented the measurement of DBH, it was calculated using digital camera photos, as described in *Phillips et al. (2016)*. Species identification was

carried out by three experienced local parataxonomists. Common names were converted to scientific names using the species list developed for the local tree community by the selective logging company operating locally and were checked for typos using 'BIOMASS' R package.

Environmental variables

We measured slope, elevation, and sand percentage in the soil at each sampling point to control for environmental heterogeneity. Soil samples were analysed at Embrapa laboratories in Macapá, Amapá. For each site the combined sample was collected with a soil auger for the 0–10 cm layer and consisted of a soil mixture from five subplots separated 50 m along a linear transect. Slope and elevation were measured at each site with a Haglöf EC-II electronic clinometer and a Garmin GPSMAP 64s, respectively. Slope was determined by measuring the angle, at 10 metres distance, of a reference point at eye height. Plot level slope and elevation are an average of seven measurements taken at the centre and borders of the tree plots.

Data analysis

We measure species diversity with the Simpson diversity (using the formula $1/\sum_{i=1}^s p_i^2$, where p_i is the proportional abundance of species and s the number of species) (Jost, 2006). Since observed species richness is likely to be underestimated (Brose, Martinez & Williams, 2003), we also calculated the species richness estimator JACK2 to estimate the species pool in each sampled forest type. Kruskal-Wallis rank sum chi-squared tests were conducted to test the homogeneity of observed species abundance distributions between forest uses (Table S1) and to compare the sampled insect communities between both seasons.

To analyse the differences in species richness, abundance and diversity between the sampled forest uses we used generalised linear models with a Gaussian error distribution. Old-growth forest is the reference level in the forest use categorical variable. The models assess the relationship between richness, abundance or diversity (response variables) and forest use (explanatory variable) and are also adjusted for three environmental variables: slope, elevation, and sand percentage in the soil. Sand percentage is used as indicator of soil texture, due to its high correlation with silt and clay (Gries *et al.*, 2012). By including these three environmental variables in our models we aim to understand if natural factors are driving the variation in our response variables. We use t -tests to test the significance of the model coefficients. We checked the residuals in all models to evaluate the adequacy of the error distribution. Furthermore, we conducted non-metric multidimensional scaling (NMDS), using the Bray–Curtis dissimilarity index, to represent the patterns of assemblage composition in the insect taxa sampled. The ANOSIM (analysis of similarities) R statistic was also calculated to assess if there were significant composition differences between all forest uses. Tree NMDS was not carried out due to the artificial tree composition in plantations. Finally, we analysed the share of species found in moderate/intensive uses that also occurred in old-growth forest and the share of species unique to each forest use (Barlow *et al.*, 2007a). In the latter, we divided the number of species occurring solely in one forest use by the total observed richness for the respective taxon. To determine if

fruit-feeding butterflies, dung beetles, and trees exhibit congruent responses to forest use change, we used the Spearman's rho coefficient, a rank-based measure of association, to assess the correlation of the richness, abundance and diversity metrics between the sampled taxa.

Unless stated otherwise, all analysis was conducted in R3.4.3. *R Core Team (2017)* in packages 'vegan' and 'stats'. All plots were created using 'ggplot2'. The map in Fig. 1 was developed in ArcGIS 10.3. We use the following abbreviations for each forest use: PRI- old-growth forest; BN- Brazil nut extraction; RIL- reduced impact logging; and PLA- eucalyptus plantations.

RESULTS

We sampled a total of 1,872 butterflies of 78 different species (Table 1), from subfamilies Charaxinae, Biblidinae, Nymphalinae and Satyrinae. Butterfly species richness was 42 in old-growth forest (PRI). It increased to 50 in Brazil nut extraction areas (BN) and to 44 in the reduced impact logging (RIL) areas but decreased to 37 in the eucalyptus plantations (PLA). BN had significantly higher butterfly richness relative to old-growth forest ($\beta = 4.69$, p -value = 0.048; Fig. 2 and Table S2).

For dung beetles, we sampled 823 individuals of 59 different species (Table 1), from tribes Ateuchini, Delthochilini, Coprini, Oniticellini, Onthophagini and Phanaeini. Dung beetle species richness was 38 in old-growth forest. It decreased to 24 species in BN and 29 in RIL and was the lowest in PLA with 19 species. Richness was significantly lower in PLA relative to old-growth forest ($\beta = -6.20$, p -value = 0.044; Fig. 2 and Table S2).

We sampled 5,674 trees belonging to 287 different species and 48 different families (Table 1). Old-growth forest sites had the highest number of species (216), which decreased to 156 in BN sites and 163 in RIL sites. As expected, eucalyptus plantation sites had negligible levels of tree species richness. All forest uses had significantly lower tree richness levels relative to old-growth forests (BN: $\beta = -11.90$, p -value = 0.006; RIL: $\beta = -15.66$, p -value = 0.004; PLA: $\beta = -70.15$, p -value < 0.001; Fig. 2 and Table S2).

Model results on abundance (Fig. 2 and Table S2) show that both butterfly ($\beta = 69.72$, p -value = 0.001) and tree ($\beta = 231.09$, p -value < 0.001) abundance were significantly higher in eucalyptus plantations than in old-growth forest. Finally, the diversity metric was significantly lower in PLA relative to PRI for all the sampled taxa (butterflies: $\beta = -8.53$, p -value < 0.001; dung beetles: $\beta = -4.14$, 0.008; trees: $\beta = -28.84$, p -value < 0.0010).

Ordination diagrams, obtained through a distance-based method (NMDS), for dung beetles and butterflies (Fig. 3) provide visual representation of the similarity of communities in BN, old-growth, and RIL forests, while eucalyptus plantations form an independent cluster. The ANOSIM R statistic for butterflies ($R = 0.78$, p -value = 0.001) and dung beetles ($R = 0.53$, p -value = 0.001) confirms that communities were more similar within the same forest use relative to other uses.

Analysis of the species that are shared between old-growth forest and other forest uses shows similar patterns across taxa, with plantations having the lowest percentage of species also occurring in old-growth forest (Fig. 4A). For example, 81% of the butterfly

Table 1 Observed species richness (S_{obs}), estimated species richness (S_{est}), abundance (N), and Simpson diversity ($1/D$), per taxon and forest use.

	Butterflies				Dung beetles				Trees			
	S_{obs}	S_{est}	N	$1/D$	S_{obs}	S_{est}	N	$1/D$	S_{obs}	S_{est}	N	$1/D$
PRI	42	62	334	20.09	38	51	262	15.99	216	324	1076	73.00
BN	50	62	415	19.22	24	37	236	6.47	156	231	1076	39.13
RIL	44	61	317	11.49	29	43	215	11.00	163	246	938	39.15
PLA	37	61	806	5.69	19	32	110	6.71	2	4	2584	1.00
Total	78	100	1872	18.66	59	86	823	19.43	287	409	5674	4.74

Notes.

PRI, old-growth forest; BN, Brazil nut extraction; RIL, reduced impact logging; PLA, eucalyptus plantation.

species occurring in old-growth forest were also found in BN sites, which was the highest percentage observed. We found that old-growth forest had the highest share (20.3%) of unique dung beetle species, in contrast with the response observed for butterflies, where it had the lowest share (3.8%) relative to other forest uses (Fig. 4B). Plantations registered the second largest share of unique species for both insect taxa (Fig. 4B). Although eucalyptus trees only occurred in plantations, they have not been considered in Fig. 4B due to their exotic status.

Cross-taxa congruence between dung beetle and butterfly richness or abundance was low (Table 2). There was however a positive correlation between both dung beetle and butterfly richness and tree richness. The same result was observed for the diversity metric. The higher abundance of both butterflies and trees in eucalyptus plantations contributes to the positive correlation between them, while the relationship is reversed between tree and dung beetle abundance. The impact of plantations in these results was confirmed by excluding plantation data from the analyses, which resulted in no significant cross-taxa associations for neither of the biodiversity metrics analysed.

A comparison of the dung beetles and butterflies sampled, across all sites, between the wetter and drier seasons showed distinct seasonal trends, with butterflies having significantly higher levels of abundance ($\chi^2 = 14.494$, p -value < 0.001) and richness ($\chi^2 = 5.820$, p -value = 0.016) in the wetter season, but not diversity ($\chi^2 = 0.287$, p -value = 0.592). For dung beetles, the differences between seasons were not significant for any metric analysed. Sites with higher butterfly richness ($\rho = 0.590$, p -value = 0.002), abundance ($\rho = 0.454$, p -value = 0.026) and diversity ($\rho = 0.472$, p -value = 0.021) were roughly the same in both seasons, while for dung beetles that correlation was only found for diversity ($\rho = 0.545$, p -value = 0.006). Plantations accounted for most of the increase in butterfly abundance in the wetter season.

DISCUSSION

Response to forest use change

The forest management regimes sampled in this study support differing levels of species richness, abundance and diversity of dung beetles, fruit-feeding butterflies and trees. Overall, our results indicate that forest use intensity reduces biodiversity in tropical

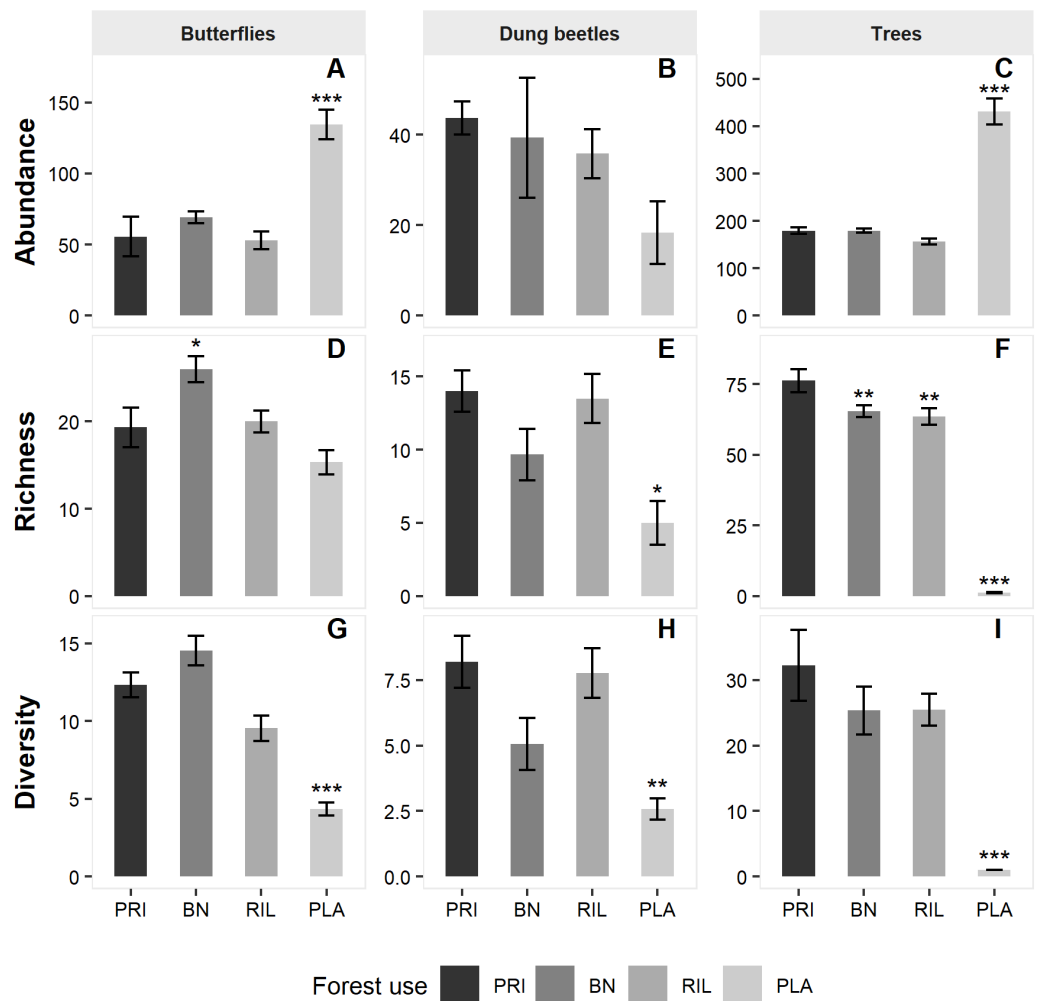


Figure 2 Mean abundance (A–C), richness (D–F) and diversity (G–I) levels across sampling sites per forest use. Error bars represent standard error of the mean. Asterisks indicate significant differences (***) p -value ≤ 0.001 ; ** p -value ≤ 0.01 ; * p -value ≤ 0.05) relative to old-growth forest (PRI). BN, Brazil nut extraction; RIL, reduced impact logging; PLA, eucalyptus plantation. Full modelling results are available in Table S2.

Full-size DOI: 10.7717/peerj.8486/fig-2

forest landscapes (Barlow *et al.*, 2016; Gibson *et al.*, 2011), selectively logged forests retain considerable conservation value (Berry *et al.*, 2010; Edwards *et al.*, 2014) and eucalyptus plantations are not necessarily devoid of biodiversity (Barlow *et al.*, 2007a; Gardner *et al.*, 2008). Additionally, our results show that forests used for Brazil nut extraction retain richness levels similar to reduced impact logging, in contrast to what was found by Gibson *et al.* (2011), where impacts of the category “other extracted forests” are closer to agroforestry or plantations.

The effects on richness found for dung beetles are relatively strong when compared with other studies (Berry *et al.*, 2010; Gardner *et al.*, 2008; Nichols *et al.*, 2007). For example, while the review by Nichols *et al.* (2007) found a mean change in total richness relative

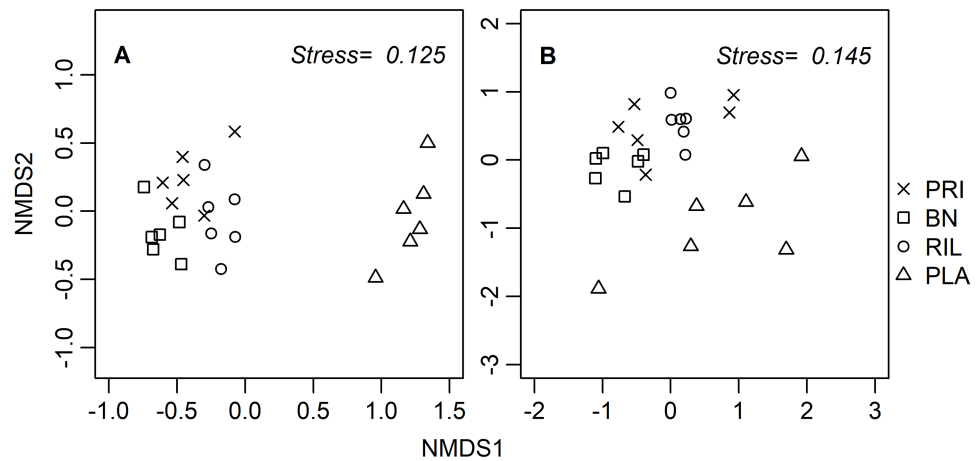


Figure 3 NMDS site ordination diagrams for (A) butterflies and (B) dung beetles. Each point represents one of the 24 sampling sites. Trees were not included due to the tree species composition in eucalyptus plantations. PRI, old-growth forest; BN, Brazil nut extraction; RIL, reduced impact logging; PLA, eucalyptus plantation.

Full-size [DOI: 10.7717/peerj.8486/fig-3](https://doi.org/10.7717/peerj.8486/fig-3)

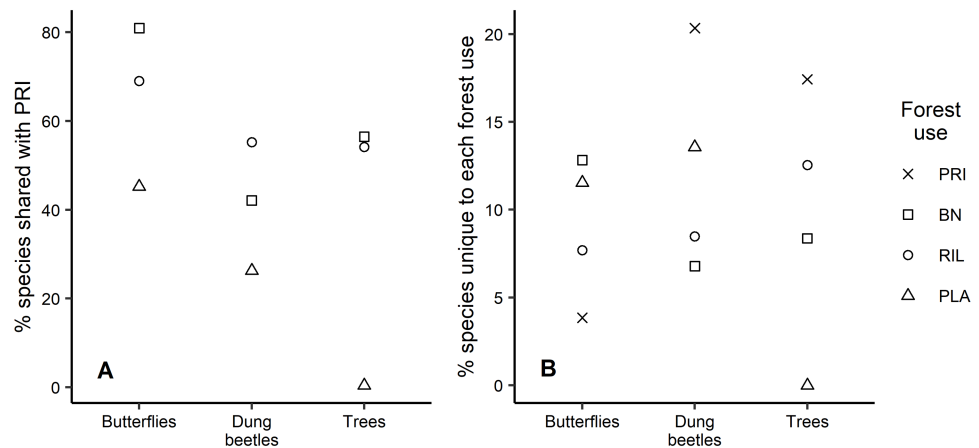


Figure 4 Species uniqueness between forest uses. (A) Percentage of species shared between old-growth forest and the other forest uses, per taxon; (B) Percentage of species unique to each forest use relative to observed richness, per taxon.

Full-size [DOI: 10.7717/peerj.8486/fig-4](https://doi.org/10.7717/peerj.8486/fig-4)

to old-growth forest of -10% for reduced-impact logging and -40% for plantations, those values were -23.7% and -50.0% , respectively, in this study. Tree richness showed a similar pattern to dung beetles, although with the inevitably drastic reduction in eucalyptus plantations. Interestingly, we found similar tree richness decreases in Brazil nut extraction areas (-27.8%) and reduced-impact logging (-24.5%), which might be a consequence of the authorised non-commercial logging carried out by the RESEX community. Brazil nut areas in the Amazon might also be associated with higher historical anthropogenic influence (Levis *et al.*, 2017). On the other hand, butterflies were the exception to the general trend, with richness numbers in moderate uses slightly higher than in old-growth forests

Table 2 Pairwise correlation across sites, for species richness, abundance and diversity, between the different taxa analysed. Correlation coefficients were calculated using Spearman rho.

	Dung beetles	Butterflies
<i>Richness</i>		
Butterflies	0.064	
Trees	0.503*	0.414*
<i>Abundance</i>		
Butterflies	−0.320	
Trees	−0.412†	0.609**
<i>Diversity</i>		
Butterflies	0.305	
Trees	0.445*	0.712***

Notes.****p*-value ≤ 0.001.***p*-value ≤ 0.01.**p*-value ≤ 0.05.

(BN: +19.0%; RIL: +4.8%) and only slightly lower under intensive use (PLA: −11.9%). Similar response patterns have been previously observed and are indicative of butterfly communities with higher co-occurrence of species specialised to distinct habitats as a result of disturbance (Fermon *et al.*, 2005; Sant’Anna *et al.*, 2014a; Sant’Anna *et al.*, 2014b).

For conservation, it is relevant to understand how many species present in low disturbance areas are retained in other forest uses, as these species tend to be more specialised and vulnerable to habitat alteration (Fermon *et al.*, 2005; Sodhi *et al.*, 2010). When considering the percentage of species that are unique to each forest use, values were generally low. Barlow *et al.* (2007a) found ca. 22%, 32%, and 57%, of butterfly, dung beetle, and tree species, respectively, occurring only on old-growth forests, while here those values were 4%, 20%, and 17%. These lower values reflect the closer similarity between communities in old-growth forests and the moderate use forests studied here and absent in Barlow *et al.* (2007a). Analysing species uniqueness from a different perspective, Barlow *et al.* (2007a) found that ca. 60% and 42% of butterfly and dung beetle species occurring in old-growth forests were shared with plantations, while results here indicated 45% and 26%, respectively. Other studies have also reported relatively higher levels of shared species than those found here (Berry *et al.*, 2010; Edwards *et al.*, 2014; Nichols *et al.*, 2007). The relatively high average distance between sampling points in this study might be a contributing factor to this difference. It is also interesting to note that the share of old-growth forest species occurring in other forest uses is always higher for butterflies than dung beetles, possibly due to their higher mobility. We expect that the majority of insect species that we found uniquely in plantations are species adapted to the conditions found in open habitats (Gardner *et al.*, 2008; Hamer *et al.*, 2003).

The abundance differences in the two insect taxa analysed showed contrasting trends. Dung beetle abundance decreased gradually from old-growth forests to moderate use areas (BN: −9.9%; RIL: −17.9%) and dropped markedly in plantations (−58.0%). This is in line with results for the same region (Gardner *et al.*, 2008), but differs from other studies (Berry *et al.*, 2010; Nichols *et al.*, 2007). Gardner *et al.* (2008) point to differences in

biogeographical context and landscape-level effects between different studies as possible explanations for the discrepancy. Tree abundance slightly decreased (−12.8%) in RIL areas, an expected consequence of timber harvesting operations. Butterflies were considerably more abundant in BN areas (+24.3%) than in old-growth forest, but slightly less abundant in RIL areas (−5.1%). Their abundance more than doubled in plantations in relation to old-growth forests (+141.3%), while in a previous study for the same region they more than quadrupled ([Barlow et al., 2007b](#)). This was mostly driven by a few species of subfamilies Nymphalinae and Satyrinae that became hyper-abundant in plantations, due to their high tolerance to disturbance ([Barlow et al., 2007b](#); [Fermon et al., 2005](#)).

Congruence among taxa

Several multitaxon studies have considered potential cross-taxon congruence to assess to which degree one taxon can accurately predict the responses of multiple others (e.g., [Barlow et al., 2007a](#); [Edwards et al., 2014](#); [Kremer, 1992](#)). However, idiosyncratic responses to disturbance tend to deter generalisations ([Gardner et al., 2009](#)). Even higher taxonomic levels, such as butterfly subfamilies, may exhibit different responses ([Barlow et al., 2007b](#); [Hamer et al., 2003](#)). Nevertheless, our results here point towards trees being the best indicator of all the taxa analysed, as it is the only taxon whose variations in richness, abundance and diversity are significantly correlated with all the other taxa analysed ([Table 2](#)). This is expected since both dung beetles and butterflies respond to changes in vegetation structure ([Hamer et al., 2003](#); [Gardner et al., 2008](#)). Trees have been identified as good indicators of ecological change in other studies ([Bobo et al., 2006](#); [Philpott et al., 2008](#); [Schulze et al., 2004](#)), although they are not necessarily better indicators than other taxa ([Barlow et al., 2007a](#); [Kessler et al., 2009](#)). The positive correlation between dung beetle and tree richness was identified in a previous study in the same region ([Barlow et al., 2007a](#)). Additionally, here we also report significant associations for abundance between trees and the insect taxa (with contrasting directions) and positive associations between tree and butterfly richness, as well as between the diversity of trees and both insect taxa ([Table 2](#)).

Seasonality effects might lead to low annual intra-taxon congruence in biodiversity sampling ([Hamer et al., 2005a](#); [Hamer et al., 2005b](#)). Here, we find no evidence of seasonality in dung beetles across all forest uses, but both butterfly richness and abundance were significantly higher in the wet season. This variation might reflect natural inter-annual variation in community dynamics ([Beiroz et al., 2017](#)) but can also be related to differences in the community structure of each forest use ([Barlow et al., 2007a](#)). Indeed, the increased butterfly abundance in the wetter season registered here was mostly driven by a few species of Satyrinae (e.g., *Paryphthimoides* sp.) and Nymphalinae (e.g., *Hamadryas feronia*) in plantations that were rare or absent in the other forest uses.

Caveats and limitations

It is relevant to highlight that the results presented here apply to a human-modified landscape containing large pools of old-growth forest. Therefore, extrapolating these results to landscapes under larger scale intensification processes should be avoided, due to potentially differentiated impacts of fragmentation and spill-over effects ([Gardner et al.,](#)

2008; *Korasaki et al., 2013; Nichols et al., 2007*). Possible time lags in responses to forest use change also prevent conclusions regarding the long-term stability of the communities sampled (*Hautier et al., 2015*).

While we consider the data collected representative of forest use conditions in the study area, the results should be interpreted with caution. Further sampling could particularly clarify the similarities and differences between communities in reduced impact logging and Brazil nut extraction areas. Still, the levels of species richness found here compare reasonably well to those found in previous studies in the same region with greater sampling efforts (*Barlow et al., 2007a; Gardner et al., 2008; Sullivan et al., 2017*). We suggest the reported differences in species richness and abundance are a consequence of variation in forest use intensity. Nevertheless, we cannot exclude the possibility that the patterns reported are being driven by certain unknown natural biotic or abiotic factors. The forest uses analysed are likely to be associated with varying pressures caused by factors such as logging, hunting, and fire occurrence, which indeed greatly affect natural communities in tropical forests (*Barlow et al., 2016; Brodie et al., 2015*). However, this study was not designed to isolate the individual effects of different disturbance factors within the forest use categories analysed.

Implications for forest management

This study analyses forest uses with widespread occurrence in the Amazon region. It demonstrates that both reduced-impact logging and Brazil nut areas can have high conservation value. In fact, both these moderate forest uses seem to retain communities closer to those found in old-growth forests than the secondary forests that also occur within the same landscape (*Barlow et al., 2007a; Gardner et al., 2008*). This implies that the allocation of more resources to the promotion and improvement of moderate forest use regimes that prevent deforestation on the long term can benefit conservation at landscape scale. Biodiversity-friendly forest uses can increase the likelihood of attaining sustainable landscapes where people and forests are able to coexist on the long-term (*Melo et al., 2013*) and can also facilitate the effective implementation of Brazilian law (Law 12.651/2012), which requires that up to 80% of every rural property in the Amazon preserves its forest cover. Integral protection areas are fundamental for forest conservation (*Gray et al., 2016*), including within human-modified landscapes, where clusters of undisturbed forest can increase system resilience and preserve healthy species pools that can recolonise regenerating forests (*Melo et al., 2013; Oliver et al., 2015*). Nevertheless, sustainable use forests can still be relevant elements of extended networks of protected areas, providing viable corridors for movement between undisturbed areas or functioning as buffers that prevent forest encroachment (*Bhagwat et al., 2008; McNeely & Schroth, 2006*).

In north-eastern Amazonia, biodiversity-rich landscapes prevail for now. But there are indications that industrialised land uses will soon increase pressure on its forests, which in the absence of effective regulations and incentives that accommodate the needs of different stakeholders can, on the long term, lead to a repetition of deforestation patterns observed elsewhere (*Melo et al., 2013; Soares-Filho et al., 2006*). With more than two thirds of its territory protected, Amapá state is in a good position to trial a development model better

suited to reconcile economic and conservation priorities through the prioritisation of biodiversity-based product value chains (Nobre *et al.*, 2016). This will require landscape-level decision making, as well as further research, that acknowledges the multifunctionality of local socio-ecological systems (Cordingley *et al.*, 2015; Reyers *et al.*, 2013).

CONCLUSION

This study demonstrates that increased forest use intensity is likely to cause negative effects on the communities of trees, dung beetles, and fruit-feeding butterflies of eastern Amazon. It therefore highlights the importance of preserving old-growth forests. Nevertheless, it also shows that biodiversity loss under extractive forest uses that introduce moderate disturbance can be relatively low, when integrated in a landscape matrix with a substantial share of old-growth forest. The two moderate uses analysed here, Brazil nut extraction and reduced impact logging, both hold substantial conservation value for the taxa studied and are able to retain communities that are relatively similar to those in old-growth forests, while intensive eucalyptus plantations have a higher impact on biodiversity. Results also confirm that studies considering multiple taxa and biodiversity metrics are more likely to provide a comprehensive perspective of how communities respond to disturbance in tropical forests. This study provides evidence to support safeguarding a healthy matrix of old-growth forest in forest management decisions and taking advantage of the potential of moderate forest uses to reconcile economic and nature conservation priorities.

ACKNOWLEDGEMENTS

We thank Breno Silva for providing space in his laboratory at UEAP for processing the material collected and Simon Lewis for comments on an earlier version of this article. We also thank André Lucci Freitas and three researchers in the LABBOR group at Unicamp, Jessie Pereira, Thamara Zacca, and Junia Yasmin, for verifying butterfly identification. Furthermore, we thank Grupo Jari for authorising access to their land and providing accommodation in Monte Dourado. We thank the Vicente family in the Marinho community of RESEX Cajari for their hospitality. Finally, a word of thanks to the local research assistants and parataxonomists that collaborated in this study.

ADDITIONAL INFORMATION AND DECLARATIONS

Funding

Sérgio Milheiras was supported by a scholarship from Fundação para a Ciência e Tecnologia (Reference SFRH/BD/95510/2013). The funders had no role in study design, data collection and analysis, decision to publish, or preparation of the manuscript.

Grant Disclosures

The following grant information was disclosed by the authors:
Fundação para a Ciência e Tecnologia (Reference SFRH/BD/95510/2013).

Competing Interests

The authors declare there are no competing interests.

Author Contributions

- Sérgio G. Milheiras conceived and designed the experiments, performed the experiments, analyzed the data, prepared figures and/or tables, authored or reviewed drafts of the paper, and approved the final draft.
- Marcelino Guedes, Fernando Augusto Barbosa Silva and Perseu Aparício performed the experiments, authored or reviewed drafts of the paper, and approved the final draft.
- Georgina M. Mace conceived and designed the experiments, analyzed the data, authored or reviewed drafts of the paper, and approved the final draft.

Field Study Permissions

The following information was supplied relating to field study approvals (i.e., approving body and any reference numbers):

Fieldwork was authorised by Instituto Chico Mendes de Conservação da Biodiversidade (process number: 56120-1) and Conselho Nacional de Desenvolvimento Científico e Tecnológico (process number: 01300.001010/2016-16).

Data Availability

The following information was supplied regarding data availability:

The data is available at the UCL Discovery repository: Milheiras, S; (2019) Patterns of biodiversity response along a gradient of forest use in Eastern Amazonia, Brazil. [Dataset]. UCL Division of Biosciences: London, UK. <http://discovery.ucl.ac.uk/10070652>.

Supplemental Information

Supplemental information for this article can be found online at <http://dx.doi.org/10.7717/peerj.8486#supplemental-information>.

REFERENCES

- Barlow J, Gardner TA, Araujo IS, Avila-Pires TC, Bonaldo AB, Costa JE, Esposito MC, Ferreira LV, Hawes J, Hernandez MIM, Hoogmoed MS, Leite RN, Lo-Man-Hung NF, Malcolm JR, Martins MB, Mestre LAM, Miranda-Santos R, Nunes-Gutjahr AL, Overal WL, Parry L, Peters SL, Ribeiro-Junior MA, Da Silva MNF, Da Silva Motta C, Peres CA. 2007a. Quantifying the biodiversity value of tropical primary, secondary, and plantation forests. *Proceedings of the National Academy of Sciences of the United States of America* **104**:18555–18560 DOI [10.1073/pnas.0703333104](https://doi.org/10.1073/pnas.0703333104).
- Barlow J, Lennox GD, Ferreira J, Berenguer E, Lees AC, Mac Nally R, Thomson JR, De Barros Ferraz SF, Louzada J, Oliveira VHF, Parry L, Ribeiro de Castro Solar R, Vieira ICG, Aragão LEOC, Begotti RA, Braga RF, Cardoso TM, De Oliveira Jr RC, Souza Jr CM, Moura NG, Nunes SS, Siqueira JV, Pardini R, Silveira JM, Vaz-de Mello FZ, Veiga RCS, Venturieri A, Gardner TA. 2016. Anthropogenic disturbance in tropical forests can double biodiversity loss from deforestation. *Nature* **535**:144–147 DOI [10.1038/nature18326](https://doi.org/10.1038/nature18326).

- Barlow J, Overal WL, Araujo IS, Gardner TA, Peres CA. 2007b.** The value of primary, secondary and plantation forests for fruit-feeding butterflies in the Brazilian Amazon. *Journal of Applied Ecology* **44**:1001–1012 DOI [10.1111/j.1365-2664.2007.01347.x](https://doi.org/10.1111/j.1365-2664.2007.01347.x).
- Beiroz W, Slade EM, Barlow J, Silveira JM, Louzada J, Sayer E. 2017.** Dung beetle community dynamics in undisturbed tropical forests: implications for ecological evaluations of land-use change. *Insect Conservation and Diversity* **10**:94–106 DOI [10.1111/icad.12206](https://doi.org/10.1111/icad.12206).
- Berry NJ, Phillips OL, Lewis SL, Hill JK, Edwards DP, Tawatao NB, Ahmad N, Magintan D, Khen CV, Maryati M, Ong RC, Hamer KC. 2010.** The high value of logged tropical forests: lessons from northern Borneo. *Biodiversity and Conservation* **19**:985–997 DOI [10.1007/s10531-010-9779-z](https://doi.org/10.1007/s10531-010-9779-z).
- Bhagwat SA, Willis KJ, Birks HJB, Whittaker RJ. 2008.** Agroforestry: a refuge for tropical biodiversity? *Trends in Ecology & Evolution* **23**:261–267 DOI [10.1016/j.tree.2008.01.005](https://doi.org/10.1016/j.tree.2008.01.005).
- Bobo KS, Waltert M, Fermon H, Njokagbor J, Mühlenberg M. 2006.** From Forest to Farmland: butterfly diversity and habitat associations along a gradient of forest conversion in Southwestern Cameroon. *Journal of Insect Conservation* **10**:29–42 DOI [10.1007/s10841-005-8564-x](https://doi.org/10.1007/s10841-005-8564-x).
- Brodie JF, Giordano AJ, Zipkin EF, Bernard H, Mohd-Azlan J, Ambu L. 2015.** Correlation and persistence of hunting and logging impacts on tropical rainforest mammals. *Conservation Biology* **29**:110–121 DOI [10.1111/cobi.12389](https://doi.org/10.1111/cobi.12389).
- Brose U, Martinez ND, Williams RJ. 2003.** Estimating species richness: sensitivity to sample coverage and insensitivity to spatial patterns. *Ecology* **84**:2364–2377 DOI [10.1890/02-0558](https://doi.org/10.1890/02-0558).
- Brown S, Lugo AE. 1990.** Tropical secondary forests. *Journal of Tropical Ecology* **6**:1–32 DOI [10.2307/2559366](https://doi.org/10.2307/2559366).
- Burivalova Z, Şekerciöğlü ÇH, Koh LP. 2014.** Thresholds of logging intensity to maintain tropical forest biodiversity. *Current Biology* **24**:1893–1898 DOI [10.1016/j.cub.2014.06.065](https://doi.org/10.1016/j.cub.2014.06.065).
- Cajaiba RL, Périco E, Dalzochio MS, Da Silva WB, Bastos R, Cabral JA, Santos M. 2017.** Does the composition of Scarabaeidae (Coleoptera) communities reflect the extent of land use changes in the Brazilian Amazon? *Ecological Indicators* **74**:285–294 DOI [10.1016/j.ecolind.2016.11.018](https://doi.org/10.1016/j.ecolind.2016.11.018).
- Chazdon RL, Harvey CA, Komar O, Griffith DM, Ferguson BG, Martínez-Ramos M, Morales H, Nigh R, Soto-Pinto L, Van Breugel M, Philpott SM. 2009.** Beyond reserves: a research agenda for conserving biodiversity in human-modified tropical landscapes. *Biotropica* **41**:142–153 DOI [10.1111/j.1744-7429.2008.00471.x](https://doi.org/10.1111/j.1744-7429.2008.00471.x).
- Cordingley JE, Newton AC, Rose RJ, Clarke RT, Bullock JM. 2015.** Can landscape-scale approaches to conservation management resolve biodiversity-ecosystem service trade-offs? *Journal of Applied Ecology* **53**:96–105 DOI [10.1111/1365-2664.12545](https://doi.org/10.1111/1365-2664.12545).
- Costa FF. 2018.** *Ocorrência e estrutura vertical de florestas com castanheiras na Amazônia Brasileira*. Macapá: UNIFAP.

- D’Abrera B. 1987.** *Butterflies of the Neotropical region. Part 4, Nymphalidae (Partim)*. Black Rock: Hill House.
- D’Abrera B. 1988.** *Butterflies of the Neotropical region. Part 5, Nymphalidae (conc.) & Satyridae*. Black Rock: Hill House.
- Darrigo MR, Venticinqué EM, Dos Santos FAM. 2016.** Effects of reduced impact logging on the forest regeneration in the central Amazonia. *Forest Ecology and Management* 360:52–59 DOI [10.1016/j.foreco.2015.10.012](https://doi.org/10.1016/j.foreco.2015.10.012).
- Davis AJ, Huijbregts H, Krikken J. 2000.** The role of local and regional processes in shaping dung beetle communities in tropical forest plantations in Borneo. *Global Ecology and Biogeography* 9:281–292 DOI [10.1046/j.1365-2699.2000.00189.x](https://doi.org/10.1046/j.1365-2699.2000.00189.x).
- Edwards DP, Magrath A, Woodcock P, Ji Y, Lim NT-L, Edwards FA, Larsen TH, Hsu WW, Benedick S, Khen CV, Chung AYC, Reynolds G, Fisher B, Laurance WF, Wilcove DS, Hamer KC, Yu DW. 2014.** Selective-logging and oil palm: multitaxon impacts, biodiversity indicators, and trade-offs for conservation planning. *Ecological Applications* 24:2029–2049 DOI [10.1890/14-0010.1](https://doi.org/10.1890/14-0010.1).
- Fermon H, Waltert M, Vane-Wright RI, Mühlenberg M. 2005.** Forest use and vertical stratification in fruit-feeding butterflies of Sulawesi, Indonesia: impacts for conservation. *Biodiversity and Conservation* 14:333–350 DOI [10.1007/s10531-004-5354-9](https://doi.org/10.1007/s10531-004-5354-9).
- França FM, Frazão FS, Korasaki V, Louzada J, Barlow J. 2017.** Identifying thresholds of logging intensity on dung beetle communities to improve the sustainable management of Amazonian tropical forests. *Biological Conservation* 216:115–122 DOI [10.1016/j.biocon.2017.10.014](https://doi.org/10.1016/j.biocon.2017.10.014).
- França F, Louzada J, Korasaki V, Griffiths H, Silveira JM, Barlow J. 2016.** Do space-for-time assessments underestimate the impacts of logging on tropical biodiversity? An Amazonian case study using dung beetles. *Journal of Applied Ecology* 53(4):1098–1105 DOI [10.1111/1365-2664.12657](https://doi.org/10.1111/1365-2664.12657).
- Gardner TA, Barlow J, Chazdon R, Ewers RM, Harvey CA, Peres CA, Sodhi NS. 2009.** Prospects for tropical forest biodiversity in a human-modified world. *Ecology Letters* 12:561–582 DOI [10.1111/j.1461-0248.2009.01294.x](https://doi.org/10.1111/j.1461-0248.2009.01294.x).
- Gardner TA, Hernández MIM, Barlow J, Peres CA. 2008.** Understanding the biodiversity consequences of habitat change: the value of secondary and plantation forests for neotropical dung beetles. *Journal of Applied Ecology* 45:883–893 DOI [10.1111/j.1365-2664.2008.01454.x](https://doi.org/10.1111/j.1365-2664.2008.01454.x).
- Gerstner K, Dormann CF, Stein A, Manceur AM, Seppelt R. 2014.** Effects of land use on plant diversity—a global meta-analysis. *Journal of Applied Ecology* 51:1690–1700 DOI [10.1111/1365-2664.12329](https://doi.org/10.1111/1365-2664.12329).
- Ghazoul J. 2002.** Impact of logging on the richness and diversity of forest butterflies in a tropical dry forest in Thailand. *Biodiversity and Conservation* 11:521–541 DOI [10.1023/A:1014812701423](https://doi.org/10.1023/A:1014812701423).
- Gibson L, Lee TM, Koh LP, Brook BW, Gardner TA, Barlow J, Peres CA, Bradshaw CJA, Laurance WF, Lovejoy TE, Sodhi NS. 2011.** Primary forests are irreplaceable for sustaining tropical biodiversity. *Nature* 478:378–381 DOI [10.1038/nature10425](https://doi.org/10.1038/nature10425).

- Gray CL, Hill SLL, Newbold T, Hudson LN, Börger L, Contu S, Hoskins AJ, Ferrier S, Purvis A, Scharlemann JPW. 2016. Local biodiversity is higher inside than outside terrestrial protected areas worldwide. *Nature Communications* 7:1–7 DOI [10.1038/ncomms12306](https://doi.org/10.1038/ncomms12306).
- Gries R, Louzada J, Almeida S, Macedo R, Barlow J. 2012. Evaluating the impacts and conservation value of exotic and native tree afforestation in Cerrado grasslands using dung beetles. *Insect Conservation and Diversity* 5:175–185 DOI [10.1111/j.1752-4598.2011.00145.x](https://doi.org/10.1111/j.1752-4598.2011.00145.x).
- Hamer KC, Hill JK, Benedick S, Mustafa N, Sherratt TN, Maryati M, Chey VK. 2003. Ecology of butterflies in natural and selectively logged forests of northern Borneo: the importance of habitat heterogeneity. *Journal of Applied Ecology* 40:150–162 DOI [10.1046/j.1365-2664.2003.00783.x](https://doi.org/10.1046/j.1365-2664.2003.00783.x).
- Hamer KC, Hill JK, Mustafa N, Benedick S, Sherratt TN, Chey VK, Maryati M. 2005a. Temporal variation in abundance and diversity of butterflies in Bornean rain forests: opposite impacts of logging recorded in different seasons. *Journal of Tropical Ecology* 21:417–425 DOI [10.1017/S0266467405002361](https://doi.org/10.1017/S0266467405002361).
- Hamer KC, Hill JK, Mustafa N, Benedick S, Sherratt TN, Chey VK, Maryati M. 2005b. Temporal variation in abundance and diversity of butterflies in Bornean rain forests: opposite impacts of logging recorded in different seasons. *Journal of Tropical Ecology* 21:417–425 DOI [10.1017/S0266467405002361](https://doi.org/10.1017/S0266467405002361).
- Hautier Y, Tilman D, Isbell F, Seabloom E, Borer E, Reich P. 2015. Anthropogenic environmental changes affect ecosystem stability via biodiversity. *Science* 348(6232):336–340 DOI [10.1126/science.aaa1788](https://doi.org/10.1126/science.aaa1788).
- IBGE. 2003. Pedologia da Amazônia Legal. In: *Escala 1:250.000*. Brasília, Brazil: Instituto Brasileiro de Geografia e Estatística.
- INMET. 2018. *Banco de Dados Meteorológicos para Ensino e Pesquisa*. Brasília: Instituto Nacional de Meteorologia.
- Jost L. 2006. Entropy and diversity. *Oikos* 113:363–375 DOI [10.1111/j.2006.0030-1299.14714.x](https://doi.org/10.1111/j.2006.0030-1299.14714.x).
- Kessler M, Abrahamczyk S, Bos M, Buchori D, Putra DD, Gradstein SR, Höhn P, Kluge J, Orend F, Pitopang R, Saleh S, Schulze CH, Sporn SG, Steffan-Dewenter I, Tjitrosoedirdjo SS, Tschardt T. 2009. Alpha and beta diversity of plants and animals along a tropical land-use gradient. *Ecological Applications* 19:2142–2156 DOI [10.1890/08-1074.1](https://doi.org/10.1890/08-1074.1).
- Korasaki V, Braga RF, Zanetti R, Moreira FMS, Vaz-de Mello FZ, Louzada J. 2013. Conservation value of alternative land-use systems for dung beetles in Amazon: valuing traditional farming practices. *Biodiversity and Conservation* 22:1485–1499 DOI [10.1007/s10531-013-0487-3](https://doi.org/10.1007/s10531-013-0487-3).
- Kremer C. 1992. Assessing the indicator properties of species assemblages for natural areas monitoring. *Ecological Applications* 2:203–217 DOI [10.2307/1941776](https://doi.org/10.2307/1941776).
- Levis C, Costa FRC, Bongers F, Peña Claros M, Clement CR, Junqueira AB, Neves EG, Tamanaha EK, Figueiredo FOG, Salomão RP, Castilho CV, Magnusson WE, Phillips OL, Guevara JE, Sabatier D, Molino J-F, López DC, Mendoza AM, Pitman

- NCA, Duque A, Vargas PN, Zartman CE, Vasquez R, Andrade A, Camargo JL, Feldpausch TR, Laurance SGW, Laurance WF, Killeen TJ, Nascimento HEM, Montero JC, Mostacedo B, Amaral IL, Guimarães Vieira IC, Brienen R, Castellanos H, Terborgh J, Carim M de JV, Guimarães JR da S, Coelho L de S, de Matos FDA, Wittmann F, Mogollón HF, Damasco G, Dávila N, García-Villacorta R, Coronado ENH, Emilio T, De Filho ALD, Schiatti J, Souza P, Targhetta N, Comiskey JA, Marimon BS, Marimon B-H, Neill D, Alonso A, Arroyo L, Carvalho FA, De Souza FC, Dallmeier F, Pansonato MP, Duivenvoorden JF, Fine PVA, Stevenson PR, Araujo-Murakami A, Aymard CGA, Baraloto C, Do Amaral DD, Engel J, Henkel TW, Maas P, Petronelli P, Revilla JDC, Stropp J, Daly D, Gribel R, Paredes MR, Silveira M, Thomas-Caesar R, Baker TR, Da Silva NF, Ferreira LV, Peres CA, Silman MR, Cerón C, Valverde FC, Di Fiore A, Jimenez EM, Mora MCP, Toledo M, Barbosa EM, De Bonates MLC, Arboleda NC, De Farias SE, Fuentes A, Guillaumet J-L, Jørgensen PM, Malhi Y, De Andrade Miranda IP, Phillips JF, Prieto A, Rudas A, Ruschel AR, Silva N, Von Hildebrand P, Vos VA, Zent EL, Zent S, Cintra BBL, Nascimento MT, Oliveira AA, Ramirez-Angulo H, Ramos JF, Rivas G, Schöngart J, Sierra R, Tirado M, Van der Heijden G, Torre EV, Wang O, Young KR, Baider C, Cano A, Farfan-Rios W, Ferreira C, Hoffman B, Mendoza C, Mesones I, Torres-Lezama A, Medina MNU, Van Andel TR, Villarroel D, Zagt R, Alexiades MN, Balslev H, Garcia-Cabrera K, Gonzales T, Hernandez L, Huamantupa-Chuquimaco I, Manzatto AG, Milliken W, Cuenca WP, Pansini S, Pauletto D, Arevalo FR, Reis NFC, Sampaio AF, Giraldo LEU, Sandoval EHV, Gamarra LV, Vela CIA, Ter Steege H. 2017. Persistent effects of pre-Columbian plant domestication on Amazonian forest composition. *Science* 355:925–931 DOI 10.1126/science.aal0157.
- Lewis OT. 2001. Effect of experimental selective logging on tropical butterflies. *Conservation Biology* 15:389–400 DOI 10.1046/j.1523-1739.2001.015002389.x.
- Lucci Freitas AV, Agra Iserhard C, Pereira Santos J, Oliveira Carreira IJY, Bandidi Ribeiro D, Alves Melo DH, Batista Rosa AH, Marini-filho OJ, Mattos Accacio G, Uehara-prado M. 2014. Studies with butterfly bait traps: an overview. *Revista Colombiana de Entomología* 40:203–212.
- Marsh CJ, Louzada J, Beiroz W, Ewers RM, Spector S, Ayzama S, McGeoch M, Van Rensburg B, Botes A, Gardner T, Nichols E, Gardner T, Barlow J, Araujo I, Avila-Pires T, Bonaldo A, Spector S, Forsyth A, Nichols E, Larsen T, Spector S, Davis A, Escobar F, Nichols E, Spector S, Louzada J, Larsen T, Amezcua S, Andresen E, Braga R, Korasaki V, Audino L, Louzada J, Slade E, Mann D, Villanueva J, Lewis O, Slade E, Mann D, Lewis O, Halffter G, Matthews E, Doube B, Vulinec K, Larsen T, Forsyth A, Spector S, Louzada J, Carvalho E, Silva P, Errouissi F, Haloti S, Jay-robert P, Janati-idrissi A, Lumaret J, Davis A, Scholtz C, Kryger U, Deschodt C, Strümpher W, Dormont L, Rapior S, McKey D, Lumaret J-P, Gittings T, Giller P, Estrada A, Halffter G, Coates-Estrada R, Meritt DJ, Vernes K, Pope L, Hill C, Bärlocher F, Howden H, Nealis V, Hill C, Horgan F, Noriega J, Larsen T, Lopera A, Forsyth A, Martín-Piera F, Lobo J, Peck S, Howden H, Horgan F,

- Shahabuddin , Hidayat P, Manuwoto S, Noerdjito W, Tscharntke T, Gill B, Boonrotpong S, Sotthibandhu S, Pholpunthin C, Davis A, Philips T, Brumm M, Sutton A, Jones D, Estrada A, Coates-Estrada R, Dadda A, Cammarano P, Gardner T, Hernández M, Barlow J, Peres C, Barlow J, Gardner T, Louzada J, Peres C, Feer F, Pincebourde S, Legendre P, Legendre L, Legendre P, Gallagher E, Borcard D, Gillet F, Legendre P, Clarke K, Oksanen J, Blanchet F, Kindt R, Legendre P, Minchin P, Edmonds W, Zidek J, Viljanen H, Wirta H, Montreuil O, Rahagalala P, Johnson S. 2013. Optimising bait for pitfall trapping of Amazonian dung beetles (Coleoptera: Scarabaeinae). *PLOS ONE* 8:e73147 DOI 10.1371/journal.pone.0073147.
- McNeely JA, Schroth G. 2006. Agroforestry and biodiversity conservation—traditional practices, present dynamics, and lessons for the future. *Biodiversity and Conservation* 15:549–554 DOI 10.1007/s10531-005-2087-3.
- Melo FPL, Arroyo-Rodríguez V, Fahrig L, Martínez-Ramos M, Tabarelli M. 2013. On the hope for biodiversity-friendly tropical landscapes. *Trends in Ecology & Evolution* 28(8):462–468 DOI 10.1016/j.tree.2013.01.001.
- Mori SA, Prance GT. 1990. Taxonomy, ecology, and economic botany of the Brazil nut (*Bertholletia excelsa* Humb And Bonpl.: Lecythidaceae). *Advances in Economic Botany* 8:130–150.
- Neild A. 1996. *The butterflies of Venezuela. Part 1, Nymphalidae I (Limenitidinae, Apaturinae, Charaxinae)*. London: Meridian Publications.
- Neild A. 2008. *The butterflies of Venezuela. Part 2, Nymphalidae II (Acraeinae, Libytheidae, Nymphalidae, Ithomiinae, Morphinae)*. London: Meridian Publications.
- Nichols E, Larsen T, Spector S, Davis AL, Escobar F, Favila M, Vulinec K. 2007. Global dung beetle response to tropical forest modification and fragmentation: a quantitative literature review and meta-analysis. *Biological Conservation* 137:1–19 DOI 10.1016/j.biocon.2007.01.023.
- Nichols E, Spector S, Louzada J, Larsen T, Amezcua S, Favila ME. 2008. Ecological functions and ecosystem services provided by Scarabaeinae dung beetles. *Biological Conservation* 141:1461–1474 DOI 10.1016/j.biocon.2008.04.011.
- Nobre CA, Sampaio G, Borma LS, Castilla-Rubio JC, Silva JS, Cardoso M. 2016. Land-use and climate change risks in the Amazon and the need of a novel sustainable development paradigm. *Proceedings of the National Academy of Sciences of the United States of America* 113:10759–10768 DOI 10.1073/pnas.1605516113.
- Oliver TH, Heard MS, Isaac NJB, Roy DB, Procter D, Eigenbrod F, Freckleton R, Hector A, Orme CDL, Petchey OL, Proença V, Raffaelli D, Suttle KB, Mace GM, Martín-López B, Woodcock BA, Bullock JM. 2015. Biodiversity and resilience of ecosystem functions. *Trends in Ecology & Evolution* 30:673–684 DOI 10.1016/j.tree.2015.08.009.
- Phillips O, Baker T, Feldpausch T, Brien R. 2016. *RAINFOR field manual for plot establishment and remeasurement*. Leeds, United Kingdom: University of Leeds.
- Philpott SM, Arendt WJ, Armbrrecht I, Bichier P, Diestch TV, Gordon C, Greenberg R, Perfecto I, Reynoso-Santos R, Soto-Pinto L, Tejeda-Cruz C, Williams-Linera G, Valenzuela J, Zolotoff JM. 2008. Biodiversity loss in Latin American coffee

- landscapes: review of the evidence on ants, birds, and trees. *Conservation Biology* 22:1093–1105 DOI [10.1111/j.1523-1739.2008.01029.x](https://doi.org/10.1111/j.1523-1739.2008.01029.x).
- R Core Team.** 2017. R: a language and environment for statistical computing. Vienna: R Foundation for Statistical Computing.
- Reyers B, Biggs R, Cumming GS, Elmqvist T, Hejnowicz AP, Polasky S.** 2013. Getting the measure of ecosystem services: a social–ecological approach. *Frontiers in Ecology and the Environment* 11:268–273 DOI [10.1890/120144](https://doi.org/10.1890/120144).
- Ribeiro DB, Freitas AVL.** 2012. The effect of reduced-impact logging on fruit-feeding butterflies in Central Amazon, Brazil. *Journal of Insect Conservation* 16:733–744 DOI [10.1007/s10841-012-9458-3](https://doi.org/10.1007/s10841-012-9458-3).
- Ribeiro DB, Prado PI, Brown Jr KS, Freitas AVL.** 2008. Additive partitioning of butterfly diversity in a fragmented landscape: importance of scale and implications for conservation. *Diversity and Distributions* 14:961–968 DOI [10.1111/j.1472-4642.2008.00505.x](https://doi.org/10.1111/j.1472-4642.2008.00505.x).
- Richardson VA, Peres C.** 2016. Temporal decay in timber species composition and value in Amazonian logging concessions. *PLOS ONE* 11:e0159035 DOI [10.1371/journal.pone.0159035](https://doi.org/10.1371/journal.pone.0159035).
- Sant’Anna CLB, Ribeiro DB, Garcia LC, Freitas AVL.** 2014a. Fruit-feeding butterfly communities are influenced by restoration age in tropical forests. *Restoration Ecology* 22:480–485 DOI [10.1111/rec.12091](https://doi.org/10.1111/rec.12091).
- Santos-Heredia C, Andresen E, Zátare DA, Escobar F.** 2018. Dung beetles and their ecological functions in three agroforestry systems in the Lacandona rainforest of Mexico. *Biodiversity and Conservation* 27:2379–2394 DOI [10.1007/s10531-018-1542-x](https://doi.org/10.1007/s10531-018-1542-x).
- Sant’Anna CLB, Ribeiro DB, Garcia LC, Freitas AVL.** 2014b. Fruit-feeding butterfly communities are influenced by restoration age in tropical forests. *Restoration Ecology* 22:480–485 DOI [10.1111/rec.12091](https://doi.org/10.1111/rec.12091).
- Schulze CH, Waltert M, Kessler PJA, Pitopang R, Veddeler D, Mühlenberg M, Gradstein SR, Leuschner C, Steffan-Dewenter I, Tschardt T.** 2004. Biodiversity indicator groups of tropical land-use systems: comparing plants, birds, and insects. *Ecological Applications* 14:1321–1333 DOI [10.1890/02-5409](https://doi.org/10.1890/02-5409).
- Slade EM, Mann DJ, Lewis OT.** 2011. ‘Biodiversity and ecosystem function of tropical forest dung beetles under contrasting logging regimes’. *Biological Conservation* 144:166–174 DOI [10.1016/j.biocon.2010.08.011](https://doi.org/10.1016/j.biocon.2010.08.011).
- Soares-Filho BS, Nepstad DC, Curran LM, Cerqueira GC, Garcia RA, Ramos CA, Voll E, McDonald A, Lefebvre P, Schlesinger P.** 2006. Modelling conservation in the Amazon basin. *Nature* 440:520–523 DOI [10.1038/nature04389](https://doi.org/10.1038/nature04389).
- Sodhi NS, Koh LP, Clements R, Wanger TC, Hill JK, Hamer KC, Clough Y, Posa MRC, Lee TM.** 2010. Conserving Southeast Asian forest biodiversity in human-modified landscapes. *Biological Conservation* 143:2375–2384 DOI [10.1016/j.biocon.2009.12.029](https://doi.org/10.1016/j.biocon.2009.12.029).
- Sullivan MJP, Talbot J, Lewis SL, Phillips OL, Qie L, Begne SK, Chave J, Cuni-Sanchez A, Hubau W, Lopez-Gonzalez G, Miles L, Monteagudo-Mendoza A, Sonké B, Sunderland T, Ter Steege H, White LJT, Affum-Baffoe K, Aiba S, De Almeida EC, De Oliveira EA, Alvarez-Loayza P, Dávila EÁ, Andrade A, Aragão LEOC, Ashton**

P, Aymard CGA, Baker TR, Balinga M, Banin LF, Baraloto C, Bastin J-F, Berry N, Bogaert J, Bonal D, Bongers F, Brienen R, Camargo JLC, Cerón C, Moscoso VC, Chezeaux E, Clark CJ, Pacheco AC, Comiskey JA, Valverde FC, Coronado ENH, Dargie G, Davies SJ, De Canniere C, Djuikouo KMN, Doucet J-L, Erwin TL, Espejo JS, Ewango CEN, Fauset S, Feldpausch TR, Herrera R, Gilpin M, Gloor E, Hall JS, Harris DJ, Hart TB, Kartawinata K, Kho LK, Kitayama K, Laurance SGW, Laurance WF, Leal ME, Lovejoy T, Lovett JC, Lukasu FM, Makana J-R, Malhi Y, Maracahipes L, Marimon BS, Junior BHM, Marshall AR, Morandi PS, Mukendi JT, Mukinzi J, Nilus R, Vargas PN, Camacho NCP, Pardo G, Peña Claros M, Pétronelli P, Pickavance GC, Poulsen AD, Poulsen JR, Primack RB, Priyadi H, Quesada CA, Reitsma J, Réjou-Méchain M, Restrepo Z, Rutishauser E, Salim KA, Salomão RP, Samsøedin I, Sheil D, Sierra R, Silveira M, Slik JWF, Steel L, Taedoumg H, Tan S, Terborgh JW, Thomas SC, Toledo M, Umunay PM, Gamarra LV, Vieira ICG, Vos VA, Wang O, Willcock S, Zemagho L. 2017. Diversity and carbon storage across the tropical forest biome. *Scientific Reports* 7:39102 DOI 10.1038/srep39102.

Ter Steege H, Pitman NCA, Killeen TJ, Laurance WF, Peres CA, Guevara JE, Salomão RP, Castilho CV, Amaral IL, De Almeida Matos FD, De Souza Coelho L, Magnusson WE, Phillips OL, De Andrade Lima Filho D, De Jesus Veiga Carim M, Irumé MV, Martins MP, Molino J-F, Sabatier D, Wittmann F, López DC, Da Silva Guimarães JR, Mendoza AM, Vargas PN, Manzatto AG, Reis NFC, Terborgh J, Casula KR, Montero JC, Feldpausch TR, Honorio Coronado EN, Montoya AJD, Zartman CE, Mostacedo B, Vasquez R, Assis RL, Medeiros MB, Simon MF, Andrade A, Camargo JL, Laurance SGW, Nascimento HEM, Marimon BS, Marimon B-H, Costa F, Targhetta N, Vieira ICG, Brienen R, Castellanos H, Duivenvoorden JF, Mogollón HF, Piedade MTF, Aymard CGA, Comiskey JA, Damasco G, Dávila N, García-Villacorta R, Diaz PRS, Vincentini A, Emilio T, Levis C, Schiatti J, Souza P, Alonso A, Dallmeier F, Ferreira LV, Neill D, Araujo-Murakami A, Arroyo L, Carvalho FA, Souza FC, Do Amaral DD, Gribel R, Luizé BG, Pansonato MP, Venticinque E, Fine P, Toledo M, Baraloto C, Cerón C, Engel J, Henkel TW, Jimenez EM, Maas P, Mora MCP, Petronelli P, Revilla JDC, Silveira M, Stropp J, Thomas-Caesar R, Baker TR, Daly D, Paredes MR, Da Silva NF, Fuentes A, Jørgensen PM, Schöngart J, Silman MR, Arboleda NC, Cintra BBL, Valverde FC, Di Fiore A, Phillips JF, Van Andel TR, Von Hildebrand P, Barbosa EM, DeMatos Bonates LC, De Castro D, De Sousa Farias E, Gonzales T, Guillaumet J-L, Hoffman B, Malhi Y, De Andrade Miranda IP, Prieto A, Rudas A, Ruschell AR, Silva N, Vela CIA, Vos VA, Zent EL, Zent S, Cano A, Nascimento MT, Oliveira AA, Ramirez-Angulo H, Ramos JF, Sierra R, Tirado M, Medina MNU, Van der Heijden G, Torre EV, Vriesendorp C, Wang O, Young KR, Baider C, Balslev H, De Castro N, Farfan-Rios W, Ferreira C, Mendoza C, Mesones I, Torres-Lezama A, Giraldo LEU, Villarroel D, Zagt R, Alexiades MN, Garcia-Cabrera K, Hernandez L, Huamantupa-Chuquimaco I, Milliken W, Cuenca WP, Pansini S, Pauletto D, Arevalo FR, Sampaio AF, Valderrama Sandoval EH, Gamarra LV. 2015. Estimating

the global conservation status of more than 15, 000 Amazonian tree species. *Science Advances* 1:e1500936 DOI 10.1126/sciadv.1500936.

Van Swaay C, Regan E, Ling M, Bozhinovska E, Fernandez M, Marini-Filho OJ, Huertas B, Phon CK, Korösi A, Meerman J, Pe'er G, Uehara-Prado M, Sáfián S, Sam L, Shuey J, Taron D, Terblanche R, Underhill L. 2015. Guidelines for standardised global butterfly monitoring. Group on Earth Observations Biodiversity Observation Network, Leipzig, Germany. GEO BON Technical Series 1. 32.

Warren AD, Davis KJ, Stangland EM, Pelham JP, Grishin NV. 2013. Illustrated lists of American Butterflies. Available at <http://butterfliesofamerica.com/L/Nymphalidae.htm>.

Wilcove DS, Giam X, Edwards DP, Fisher B, Koh LP. 2013. Navjot's nightmare revisited: logging, agriculture, and biodiversity in Southeast Asia. *Trends in Ecology & Evolution* 28:531–540 DOI 10.1016/j.tree.2013.04.005.