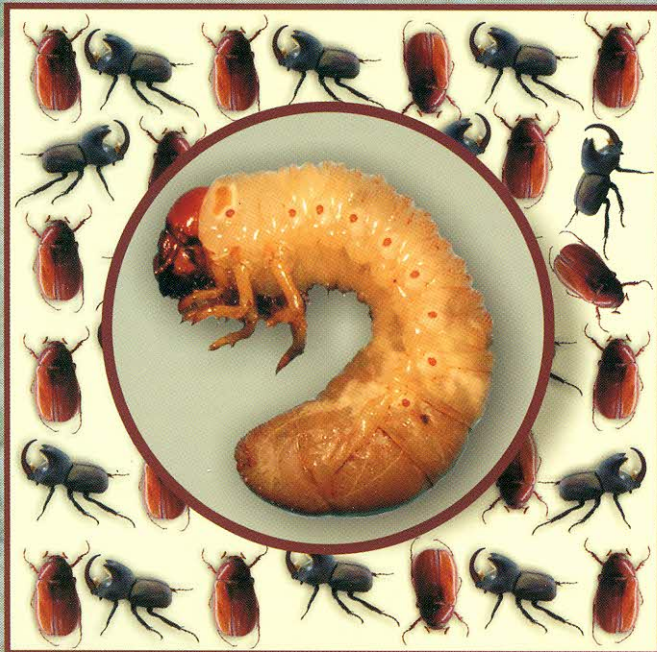
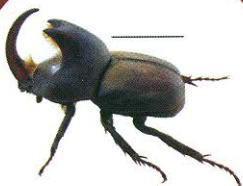


# DIFERENCIAÇÃO DAS ESPÉCIES DE CORÓS QUE OCORREM EM CEREAIS DE INVERNO, MILHO E SOJA NO RIO GRANDE DO SUL

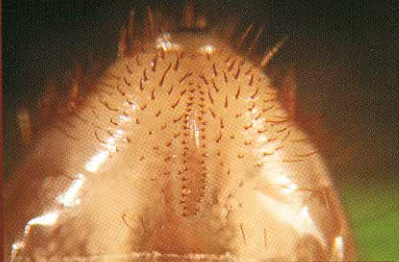
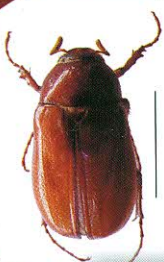


*Diloboderus abderus*



Coró-das-pastagens

*Phyllophaga triticophaga*



Coró-do-trigo

